

Air Conditioning

Product Information

PLA-ZRP35BA : Inverter Heat Pump

R410A Floor Mounted System

Mr.SLIM™



Our wide range of Power Inverters offer customers high seasonal efficiency, advanced control options and quiet operation, whilst providing greater flexibility and ease of installation.

FEATURES



INDOOR

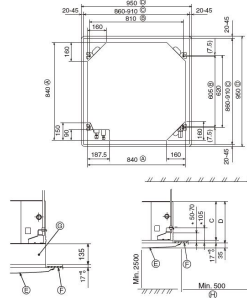
Heating Capacity (kW) (nominal)	4.1 (1.6 - 5.2)
Cooling Capacity (kW) (nominal)	3.6 (1.6 - 4.5)
Heating Capacity (kW) (UK)	3.5 (1.35 - 4.4)
Cooling Capacity (kW) (UK)	3.3 (1.45 - 4.15)
SHF (nominal and UK)	0.96
COP / EER (nominal)	4.77 / 4.56
SCOP / SEER	4.6 / 6.8
Energy Efficiency Class - Heating / Cooling	A++ / A++
Pipe Size Gas (mm [in])	6.35 (1/4")
Pipe Size Liquid (mm [in])	12.7 (1/2")
Airflow (m³/min) Lo-Mi-Mi2-Hi	11 - 13 - 15 - 16
Sound Pressure Level (dBA) Lo-Mi-Mi2-Hi	27 - 28 - 29-31
Sound Power Level (dBA) Cooling	54
Dimensions (mm) Width x Depth x Height	840(950) x 840(950) x 258(35)
Weight (kg) Unit / grille	23 / 6
Electrical Supply	FED BY OUTDOOR UNIT
Phase	SINGLE
Fuse Rating (BS88) - HRC (A)	6
Interconnecting Cable No. Cores	4

OUTDOOR

Sound Pressure Level (dBA) Heating / Cooling	46 / 44
Sound Power Level (dBA) Cooling	65
Weight (kg)	43
Dimensions (mm) Width x Depth x Height	809 x 300+23 x 630
Electrical Supply	220-240V, 50HZ
Phase	SINGLE
System Power Input (kW) - Heating / Cooling (nominal)	0.86 / 0.79
System Power Input (kW) - Heating / Cooling (UK)	0.77 / 0.67
Starting Current (A)	4
System Running Current (A) [MAX] - Heating / Cooling	4.17 / 3.82 [13.3]
Fuse Rating (BS88) - HRC (A)	16
Mains Cable No. Cores	3
Max Pipe Length (m)	50
Max Height Difference (m)	30
Charge R410A (kg) - Pre charged length (m)	2.2 - 30

DIMENSIONS

PLA-ZRP35BA



(mm)		
Models	A	B
(Z)RP35, 60	80	74
(Z)RP60	87	74
(Z)RP71, 100, 125, 140	95	77

- ① Outer side of main unit
 - ② Bolt pitch
 - ③ Ceiling opening
 - ④ Outer side of Grille
 - ⑤ Grille
 - ⑥ Ceiling
 - ⑦ Mult function casement (option)
 - ⑧ Entire periphery
- *Note that the space between ceiling panel of the unit and ceiling slab, etc. must be 10 to 15 mm.
* When the optional multi-functional casement is installed, add 135 mm to the dimensions marked on the figure.

(mm)		
Models	C	D
PLA-RP35/60/80/71/BA(2)	241	258
PLA-ZRP35/60/80/BA		
PLA-RP100/125/140/BA(2)		
PLA-RP100/BA3	281	288
PLA-ZRP71/100/125/140/BA		

DIMENSIONS

PUHZ-ZRP35VKA

